

## PRODUCT DATA SHEET

### AV 185 ZE with strain relief clamps

#### DESIGN

Two-piece, very stable, screwed sleeve shells with a special shape to accommodate a clamping ring. The seal is made with foam seals with break-out rings, which can be adjusted to the cable diameter without tools. The cable joint is protected electrically and mechanically by casting with ecologically optimized casting compound ISO-PUR K2000, thin casting compound ISO-PUR K762 or label-free casting compound ISO-CAST BRH. However, the cable joint can also be cast with removable masses (SZ mass, hot casting mass, ISO-PUR K715).

#### USE

The AV cable joint can be used universally on plastic cables using compact clamping rings. It is used particularly for mechanically heavily stressed cables.

#### TESTS

- DIN VDE 0278 part 3
- DIN VDE 0291 draft 6 / 97
- DIN VDE 0291 part 2
- DIN EN 50393 (VDE 0278-393)
- DIN EN 50655-1:2018-06
- E DIN EN 60455-3-8:2018-02
- prHD 631.1
- European standard HD 623S / 1.97
- KEMA - tested (10 m water pillar)
- Additional high current (short circuit) test (VEW - PA 003)
- Control of each batch acc. DIN / ISO 9001



AV 185 ZE

#### ASSEMBLY

Branch and main cables are connected with common compact clamp rings. With these rings, it is not necessary to remove the core insulation. Then the foam seals are adjusted to the cable diameter and the strain relief clamps are fitted. The screwed cable joint is then poured with cast resin over the large filling opening and closed with a cover. Fast filling of the cable ditch is possible due to the rapid hardening of the casting compound and the high mechanical stability of the cable case.

#### DELIVERY

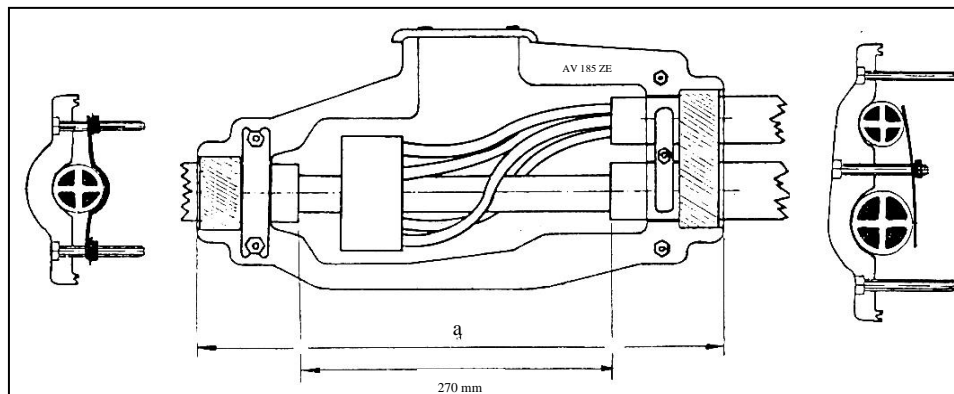
Sleeve shells, seals, cover, auxiliary material, cast resin, assembly instructions. On request, cast resin in two-chamber bags, cans, or hardener in reusable bottles.

#### ACCESSORIES (ON REQUEST)

Compact clamping rings, cable clamps, compression connectors, solderless grounding set.

## DIMENSIONS OF CABLE CASES AND EXAMPLES OF SUITABLE CABLE/JOINT COMBINATIONS

Cable joint type	Outside length a (mm)	Inside length b (mm)	Max. diameter c (mm)	Volume (ltr. )	Max. diameter main / branch cable (mm)	Suitable cable types	Main or connection cable dimensions (mm <sup>2</sup> )	Branch cable dimensions (mm <sup>2</sup> )
AV 185 ZE	410	360	140	4,0	60 / 45	N(A)YY NA2XY N(A)YCWY	4 x 16 bis 4 x 185 4 x 16 bis 4 x 185 3 x 35/35 bis 3 x 185/185	4 x 16 bis 4 x 120 4 x 16 bis 4 x 120 3 x 35/35 bis 3 x 95/95



### SELECTION EXAMPLE

Cable data:  
 Main cable           NAYCWY 3 x 185/ 185 mm<sup>2</sup>  
 Branch cable        NAYCWY 3 x 70/ 70 mm<sup>2</sup>  
 House interfacing  
 AV 185 ZE